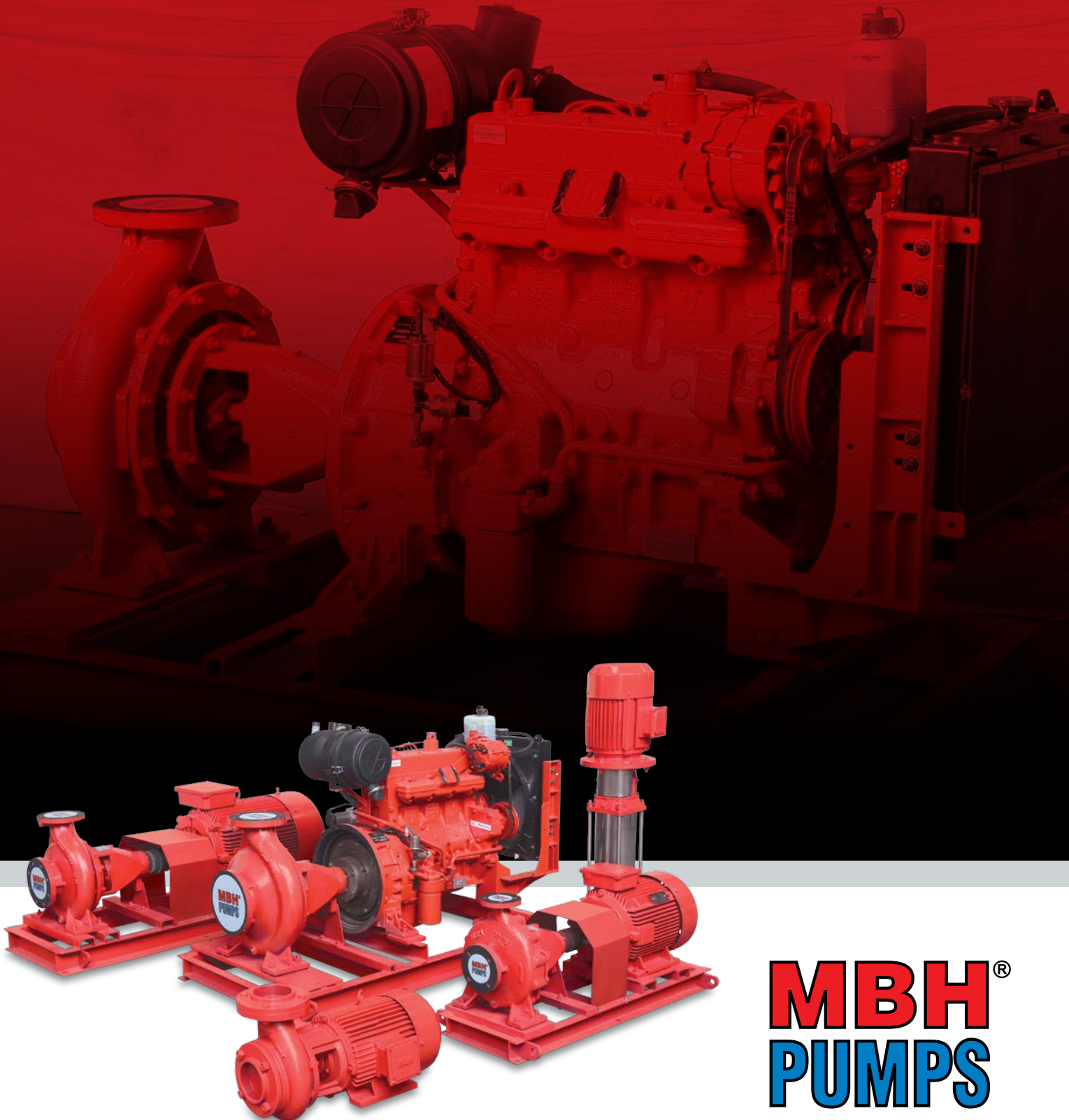


H₂O Series Fire Pumps and Systems

Wide range, really robust and definitely reliable



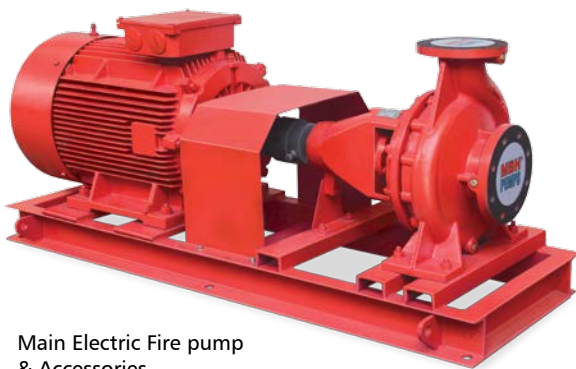
MBH[®]
PUMPS



The H₂O Series Fire Pumps

are designed to provide water to stand pipe, sprinkler and hydrant systems for fire suppression in industrial and commercial facilities.

- Top centerline discharge with foot supported casing.
- Ease of installation.
- Simplifies piping layout.
- Self-venting design eliminates the need for automatic air release valve.
- Rear pullout design supplied as standard with spacer coupling.
- Ease of maintenance, eliminates disturbing driver or piping when removing rotating element.
- Hydraulically balanced impeller extends bearing life and assures smoother operation.
- Cast iron construction with bronze impeller
- Standards : NFPA 20



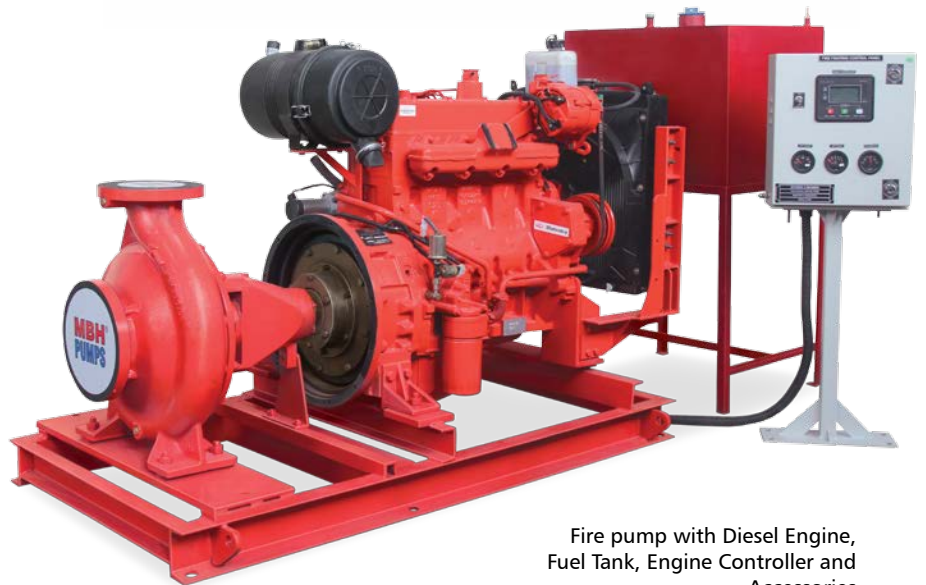
Main Electric Fire pump
& Accessories

Flow rate upto 600 m³/hr
Maximum head 140 m



Jockey pump

Flow rate upto 75 m³/hr
Maximum head 220 m



Fire pump with Diesel Engine,
Fuel Tank, Engine Controller and
Accessories

Flow rate upto 600 m³/hr
Maximum head 140 m

specifications and performance are subject to change without prior notice.

MBH[®] PUMPS

Plot No. 14, G.I.D.C. Indl. Estate,
Naroda, Ahmedabad - 382 330, India.
Phone : 079-2282 3066, 2282 1018
Fax : 079-2282 1511
E-mail : marketing@mbhpumps.com
Website : www.mbhpumps.com

